

Modular Cooking Range Line 700XP Sink Top with Water Column, 400 mm

ITEM # _____
 MODEL # _____
 NAME # _____
 SIS # _____
 AIA # _____



371214 (E7SUNDQ000)

Sink top with water column,
1/2 module

Short Form Specification

Item No. _____

730mm deep unit with 1,5mm thick AISI 304 stainless steel worktop and exterior panels in Stainless Steel with Scotch Brite finishing.

AISI 304 well, 1mm-thick and 150mm deep with GN 1/1 dimensions. Features tap with hot and cold water knobs and right-angled side edges to allow flush fitting joints between units, eliminating gaps and possible dirt traps.

Main Features

- Tap with hot and cold water knobs.
- Well with GN1/1 dimension, 150mm deep.
- Top configuration allows installation on ambient base only (not possible to install on refrigerated nor freezer base).
- Suitable for countertop installation.

Construction

- Unit is 730mm deep to give a larger working surface area.
- AISI 304 stainless steel worktop, 1,5mm thick.
- AISI 304 well, 1mm-thick.
- Model has right-angled side edges to allow flush fitting joints between units, eliminating gaps and possible dirt traps.
- All exterior panels in Stainless Steel with Scotch Brite finishing.

Optional Accessories

- Junction sealing kit PNC 206086 ☐
- Support for bridge type system, 800mm PNC 206137 ☐
- Support for bridge type system, 1000mm PNC 206138 ☐
- Support for bridge type system, 1200mm PNC 206139 ☐
- Support for bridge type system, 1400mm PNC 206140 ☐
- Support for bridge type system, 1600mm PNC 206141 ☐
- Support for bridge type system, 400mm PNC 206154 ☐
- Chimney upstand, 400mm PNC 206303 ☐
- Right and left side handrails PNC 206307 ☐
- BACK HANDRAIL 800 MM - MARINE PNC 206308 ☐
- CHIMNEY GRID NET,590MM-700&900LINE PNC 206403 ☐
- Frontal handrail 400mm PNC 216046 ☐
- Frontal handrail 800mm PNC 216047 ☐
- Frontal handrail 1200mm PNC 216049 ☐
- Frontal handrail 1600mm PNC 216050 ☐
- Large handrail - portioning shelf, 400mm PNC 216185 ☐
- Large handrail - portioning shelf, 800mm PNC 216186 ☐
- 2 side covering panels for top appliances PNC 216277 ☐

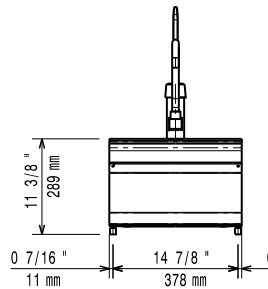
APPROVAL: _____



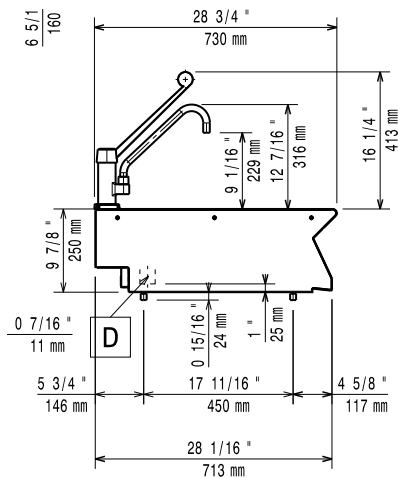
Electrolux
PROFESSIONAL

Modular Cooking Range Line 700XP Sink Top with Water Column, 400 mm

Front

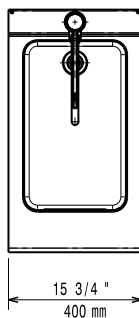


Side



- CWI1 = Cold Water inlet 1 (cleaning)
D = Drain
HWI = Hot water inlet

Top



Key Information:

External dimensions, Width:	
371214 (E7SUNDQ000)	400 mm
External dimensions, Depth:	730 mm
External dimensions, Height:	250 mm
Net weight:	10 kg

Modular Cooking Range Line
700XP Sink Top with Water Column, 400 mm

The company reserves the right to make modifications to the products without prior notice. All information correct at time of printing.

2025.04.19